

Information for Family and Friends

of Patients at
UPMC Shadyside



UPMC



Welcome

Welcome to Pittsburgh and the University of Pittsburgh Medical Center (UPMC). An important part of the care we provide is to help our patients and their families become familiar with their surroundings. Our primary concern is our patients' health and well-being, but we know this may be a difficult time for their loved ones too.

This brochure was created especially for the families and friends of patients at UPMC Shadyside.

Inside, you will find information about the hospital, its Shadyside neighborhood, and the city of Pittsburgh to help you feel more at home.



UPMC Shadyside provides language assistance services at no cost to its patients and families.

Медицинский центр Шедисайд
Питтсбургского университета
бесплатно предоставляет услуги
переводчика пациентам
медицинского центра и их семьям.

El UPMC Shadyside provee servicio gratuito de asistencia con lenguajes a pacientes y sus familiares.

UPMC Shadyside hastalarına ve hasta ailelerine ücretsiz yabancı dil servisi sağlamaktadır.

UPMC Shadyside oferece serviços gratuitos de tradução e interpretação a todos os seus pacientes e familiares.

L'UPMC Shadyside offre al paziente e alla Famiglia un servizio gratuito d'interprete.

المركز الطبي بجامعة بيتسبرج
في شيدى سايد يزود خدمة
الترجمة للمرضى وعائلاتهم مجاناً.

For assistance, please call Patient Relations at 412-623-2014.

- 4 Pittsburgh: A Vibrant Community**
- 6 UPMC: Leader in Health Care**
- 9 UPMC Shadyside: An Elegant Campus**
Helps to Navigate the Services and Facilities
- 12 Arriving at UPMC Shadyside**
By Car, Air, Bus, or Train
- 16 Lodging in the Area**
Commercial Hotels, Furnished Apartments,
Family House
- 20 Getting Around Shadyside and the City**
Walking, UPMC Shuttle, Public Transit,
Taxi Cab
- 22 Hospital Services and Amenities**
Banking, Gift Shops, Dining and Refreshments,
Hair Salon, Wireless Service
- 26 Safety in the Hospital**
Cell Phones and Wireless, Condition H,
Safety and Security, Smoke-Free Campus
- 28 Things to Do in the Area**
Near Shadyside, In and Near Downtown
- 35 Chaplains and Places of Worship**
At the Hospital, In and Near Shadyside

Pittsburgh: A Vibrant Community

Visitors to Pittsburgh often find it a pleasant surprise. Downtown Pittsburgh sits on a triangle of land in a valley of green hills where the Allegheny and Monongahela rivers join at the historic Point to form the Ohio River. The city has been listed among the nation's best cities in which to live and work.

Pittsburgh is a regional center for business, industry, research, education, recreation, and the arts. Few of the steel mills that once gave Pittsburgh its prominence remain. Today, the health care industry, high-tech companies, and service industries employ most Pittsburghers.

A major city with a small-town atmosphere, Pittsburgh is enriched by a vibrant cultural life and ethnic diversity. Newcomers frequently comment on the city's friendliness. You may hear Pittsburghers call it "someplace special."

Should you have an opportunity to explore Pittsburgh during your stay, this booklet offers many suggestions for things to do. Additional information is available on the Visit Pittsburgh website at www.visitpittsburgh.com.



UPMC: Leader in Health Care

UPMC is the premier health system in western Pennsylvania and one of the most renowned academic medical centers in the United States.

With a vision for the future, UPMC has developed a broad network of health care services: hospitals that provide advanced care for complex illnesses; specialty hospitals for women and children; a behavioral health facility; community hospitals; a health insurance organization; and an array of other health care services such as long-term care and home care. UPMC has internationally renowned centers in transplantation, cancer, otolaryngology, geriatrics, rheumatology, neurology and neurosurgery, orthopaedics, psychiatry, and women's health, among others.





UPMC partners with the University of Pittsburgh Schools of the Health Sciences to provide quality patient care, increase biomedical knowledge through research, and educate health care professionals for the future. Because of UPMC's size and the breadth of its specialty areas, you may find it both exciting and a bit overwhelming. You can learn more about UPMC at www.upmc.com.



UPMC Shadyside: An Elegant Campus

UPMC Shadyside is situated on a beautiful campus in a sophisticated neighborhood of Shadyside. The hospital is recognized for excellence and innovation in patient care. In 2010, UPMC Shadyside



earned Magnet® status from the American Nurses Credentialing Center. Receiving Magnet Recognition® is one of the highest achievements a hospital can obtain in professional nursing and demonstrates nursing excellence, a commitment to quality patient care, and a healthy work environment. UPMC Shadyside is a flagship hospital of UPMC, where highly trained staff will care for your loved one. UPMC's ongoing commitment to outstanding patient care and advancement of medical therapies and technologies continues to be recognized by US News and World Report as one of the best systems nationwide. The campus also is home to Hillman Cancer Center, one of the most advanced cancer care and research facilities in the nation.

Navigating on Campus

Listed on the next pages are resources to help you navigate the services and facilities of UPMC Shadyside.

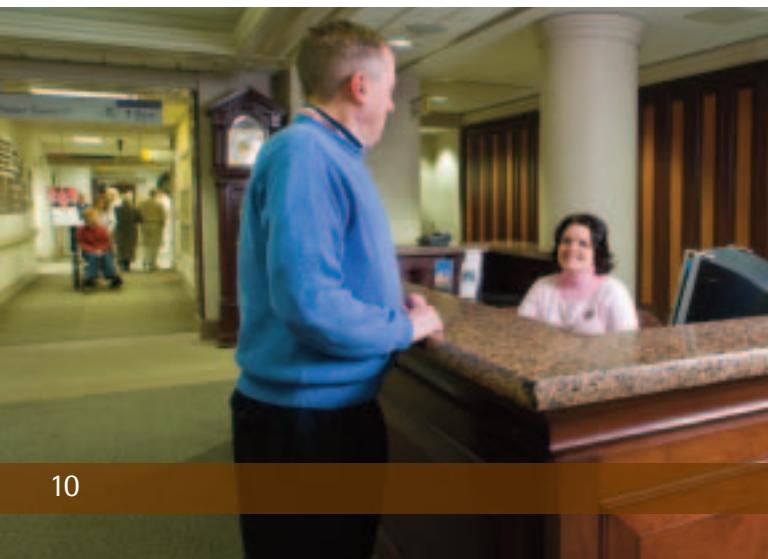


Patient Relations

Among the many people who will contribute to the care of your family member at UPMC Shadyside are Patient Relations coordinators. If you have questions or experience any problems during your hospital stay, a Patient Relations coordinator can assist you in resolving them. To reach Patient Relations, please call 412-623-2014.

Wayfinding maps

Color-coded wall maps are displayed at the hospital's main entrances and mounted on walls inside UPMC Shadyside. The maps can help you find your way through the campus. The "You are here" marker on each wall map shows your location. In addition, hand maps of the campus are available in the holders on the map kiosks at the hospital's main entrances. You may also ask for a hand map at the Information Desks.



Information desks

For assistance, you can stop by or call the Information Desks in the first floor lobbies at these locations:

Posner Tower — 412-623-2446

East Wing — 412-623-6730

Shadyside Medical Building — 412-623-6168

Patient handbook

A helpful source of information about UPMC Shadyside is the Patient Handbook that you or your family member received when admitted to the hospital. The handbook tells you about hospital policies, hospital services, patient care, billing, discharge, and patients' rights and responsibilities. You can obtain a copy of the Patient Handbook by calling Patient Relations at 412-623-2014.

Special needs

For patients and visitors with special needs due to hearing impairment, visual impairment, or language barriers, the hospital offers printed educational materials, amplified telephones, closed-caption television, sign language interpreters, foreign language interpreters, and a portable teletypewriter (TTY) for the deaf. Upon request, the hospital can assist patients or visitors who have physical limitations. For special needs, call Patient Relations at 412-623-2014.



Arriving at UPMC Shadyside

Parking

Pay parking is available for visitors to UPMC Shadyside at two convenient locations. Pay stations are located near garage elevators at hospital first floor level.

Aiken Avenue Parking Garage

Located on South Aiken Avenue. Open 24 hours a day, seven days a week.

Centre Avenue Parking Garage

Located across from Hillman Cancer Center. Open 24 hours a day, seven days a week.

For questions about parking garages, call 412-623-3561.

Parking amenities

Discounted Parking

A patient's family member who is parked four hours in a row or more in a UPMC Shadyside parking garage can receive a discount. Present your parking ticket at one of the Information Desks for validation.

Long-term Stays

On the 10th day of a patient's stay, family members are offered a discount for either of the UPMC Shadyside parking garages. If you have questions, call 412-623-2014.

Escort Service

Upon request, UPMC Security provides evening escort service from the hospital to your vehicle. To request an escort, please call 412-623-2990.

Lost and Found

Visitors should call Security 412-623-2990.



Arriving by air

On arrival at Pittsburgh International Airport, you will be in Moon Township, about 25 miles from UPMC Shadyside, which is in Pittsburgh's Shadyside area.

To travel from the airport to UPMC Shadyside, several options for transportation are available.

Limousine Service

Majesty Transportation provides limousine service between the airport and Shadyside. You must make limousine reservations a day in advance. Call toll-free 1-888-794-3400.

Taxi Cab

Pittsburgh Transportation Group — 412-321-8100

Arriving by bus or train

Greyhound and Trailways Bus Terminal

Bus terminal is located at 55 11th Street downtown. For travel information, call 1-800-231-2222 or terminal 412-392-6526.

Amtrak Train Station

The train station is located in downtown Pittsburgh, at Liberty Avenue and Grant Street. For information, call 1-800-USA-RAIL (872-7245).

From Downtown to Shadyside

UPMC Shadyside is located in the Shadyside area of Pittsburgh, about 7 miles from downtown Pittsburgh. You may travel from downtown to UPMC Shadyside in several ways.

Public Transit:

Several bus routes serve the Shadyside area. For more information, call Port Authority at 412-442-2000, or visit www.portauthority.org.

Taxi Cab:

Pittsburgh Transportation Group — 412-321-8100



Lodging in the Area

Commercial hotels

A variety of accommodations are available in Shadyside and the nearby Oakland area. Ask if the hotel offers discounts to UPMC patients and families. Also ask if the hotel provides shuttle service to UPMC Shadyside.

Courtyard by Marriott Shadyside/Oakland

5308 Liberty Ave.

Pittsburgh, PA 15224 (Shadyside)

412-683-3113

Forbes Avenue Suites

3401 Forbes Ave.

Pittsburgh, PA 15213 (Oakland)

412-325-3900

Hampton Inn University Center

3315 Hamlet St.

Pittsburgh, PA 15213 (Oakland)

412-681-1000

Holiday Inn Select Hotel

100 Lytton Ave.

Pittsburgh, PA 15213 (Oakland)

412-682-6200

The Inns on Negley

704 and 714 S. Negley Ave.

Pittsburgh, PA 15232 (Shadyside)

412-661-0631

Marriott Residence Inn Pittsburgh

3896 Bigelow Blvd.
Pittsburgh, PA 15213 (Oakland)
412-621-2200

Quality Inn University Center

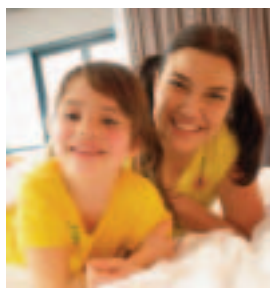
3401 Blvd. of the Allies
Pittsburgh, PA 15213 (Oakland)
412-683-6100

Sunnyledge Hotel

5124 Fifth Ave.
Pittsburgh, PA 15232 (Shadyside)
412-683-5014

Wyndham Garden Hotel

Forbes Ave. at McKee Place
Pittsburgh, PA 15213 (Oakland)
412-683-2040



Furnished apartments

Furnished apartments are available for long-term stays:

Friendship Suites

301 Stratford Ave.

Pittsburgh, PA 15232 (Friendship)

412-392-1935

Graham House Apartments

439-445 S. Graham St.

Pittsburgh, PA 15232 (Shadyside)

412-661-2261

Shadyside Inn & Suites

5405 Fifth Ave.

Pittsburgh, PA 15232 (Shadyside)

412-441-4444

Springhill Suites Marriot

134 Bakery Square Boulevard

Pittsburgh, PA 15206

412-362-8600

Family House

Family House Shadyside offers gracious, home-like suites at low cost for long-term stays at UPMC. To request a room, call 412-647-7777, or go to www.familyhouse.org/request_room.asp.





Getting Around Shadyside and the City

Walking

Walking generally is the best way to get around Shadyside. Many stores and services are within walking distance of UPMC Shadyside. The shopping districts are situated along Walnut Street and Ellsworth Avenue. In these locales, you'll find restaurants and establishments for baked goods; books and magazines; cards, gifts, and flowers; convenience items and groceries; drugs; dry cleaning and laundering; and hair care. You can browse in a variety of specialty boutiques. Ask for more information at one of the Information Desks.

UPMC shuttle

UPMC's free shuttle — the Blue Shuttle — stops at a number of UPMC locations in Shadyside and Oakland. The shuttle runs on weekdays, 6 a.m. to 6 p.m., and on weekends and holidays, 6 to 11:30 a.m. and 6 to 9:30 p.m. For assistance during off hours, call UPMC Shadyside Security at 412-623-2990.

Schedules are available at the Information Desks in UPMC facilities. For more information, call Parking Operations at 412-623-6257 or 412-647-3194.

Public transit

Port Authority offers convenient bus service to Shadyside and all parts of the Pittsburgh metropolitan area. Bus stops are located on Centre Avenue, near UPMC Shadyside at the corner of Centre and South Aiken Avenue and in front of the hospital at the corner of Centre and Cypress Street.

You must have exact change. Fares may change without notice. Schedules for a variety of bus routes are available at the Information Desks of UPMC Shadyside. For more information, call Port Authority at 412-442-2000, or visit www.portauthority.org.

Taxi cab

Pittsburgh Transportation Group — 412-321-8100

A close-up photograph of a person's hand using a credit card at an ATM. The hand is positioned over the card reader, and the ATM keypad and screen are visible in the background.

Hospital Services and Amenities

Banking

Bank Machines

Pavilion: first floor near the visitor elevators

Shadyside Medical Building: first floor near the Hopwood Library

Neighborhood banks: Several banks within walking distance have bank machines.

Local Bank Accounts

For a longer stay in Pittsburgh, you may want to open a local bank account. Allow for seven to 14 days after opening the account before you can withdraw funds. Consider bringing travelers checks or a bank debit card with you.



Gift shops

Blue Box Gift Shop

Fine gifts, fresh floral arrangements, greeting cards, newspapers, magazines, paperback books, snack foods, jewelry, handbags, scarves, sportswear including UPMC active wear, infant gifts, plush animals, toys, balloons, lottery and stamp machines. Mailbox located near West and Main Information Desks.

Posner Tower, first floor, past the Information Desk. Weekdays, 8:30 a.m. to 6:30 p.m.; weekends, 10 a.m. to 4 p.m. Closed holidays. Phone: 412-623-2058.

The Gift Shop at Hillman

Inspirational gifts, jewelry, handbags, greeting cards, magazines, snack foods, candy, sundries, lottery machine, specialty lotion for cancer patients.

Hillman Cancer Center, ground level, off the lobby (across Centre Avenue from UPMC Shadyside). Weekdays, 9 a.m. to 3 p.m. Closed weekends and holidays. Phone: 412-623-4654.



Dining and refreshments

Cafeteria

Visitors are welcome to dine in the cafeteria. Patients may dine in the cafeteria with their doctors' permission. The cafeteria serves breakfast, lunch, and dinner, offering a wide variety of hot and cold meals. Included are traditional meals; specialty items such as kosher sandwiches; and Dining Smart options for health-conscious diners. Take-out also is available.

Posner Tower, first floor, near the gift shop.
Daily, 6:30 a.m. to 7:30 p.m. hot food available;
Tuesday through Saturday: 2 a.m. to 4 a.m.;
Daily, 7:30 a.m. to 8:00 p.m. a cold selection of
Grab and Go items.

Guest Trays

For a fee, patients or their visitors may order a guest tray for the patient room. To place an order, call Food Services at 412-623-0028. Please pre-pay in cafeteria.

West End Café

The West End Café features specialty drinks, salads, sandwiches, soups, and pastries.

West Wing lobby, near Shadyside Medical Building. Weekdays, 6 a.m. to 3:30 p.m.

The Cafe at Hillman

The Cafe at Hillman offers both hot and cold foods. Breakfast: 7 a.m. to 11 a.m.; lunch: 11 a.m. to 4 p.m.

Hillman Cancer Center, level one (the Shea Pedestrian Bridge from UPMC Shadyside leads to the Cafe). Weekdays, 7 a.m. to 4 p.m.

Hair salon

The LHAS Hair Salon at Hillman Cancer Center offers retail products which include wigs, hats, hair loss treatments, and hair care products.

Patients, visitors, and staff are welcome.

Appointments preferred. Free consultations. Visa and MasterCard accepted. Sponsored by Ladies Hospital Aid Society. For more information or to make an appointment, call 412-623-3777.

Hillman Cancer Center, level one (the Shea Pedestrian Bridge from UPMC Shadyside leads to level one). Monday to Friday, 9 a.m. to 2 p.m.

Wireless service

Free wireless service is available in the hospital.

Patients and visitors can access the Internet on their laptops and other computer devices while in a Wi-Fi “hotspot.” To log on, open “Network Connections” on your laptop or computer device and connect to GIA (Guest Internet Access).





Safety in the Hospital

Cell phones and wireless

Some areas of the hospital have restrictions on the use of cell phones, wireless computers, and other wireless devices that transmit radio signals. Please check with the staff before using such devices. Do not use cell phones or any wireless device within 6 feet of medical equipment in patient care areas.

Condition H

Condition H (Help) is a way to get help in an emergency or when the patient cannot get the attention of the health care team. A reason to call Condition H would be a noticeable change in the patient's medical condition that the health care team is not recognizing. Another reason would be a breakdown in how care is given or confusion over what care is needed. The patient or the family may call.

To access Condition H, dial 3-3131 from any hospital phone, and give your name, the room number, the patient's name, and the patient's concern. The operator will activate Condition H. This alerts a special health care team to come to the patient's room to assess the situation.

Safety and security

Please be extra careful and safety conscious while you are in the hospital. Do as staff members ask in order to keep all of our patients, visitors, and staff safe. Patients who have valuables at the hospital should give them to a family member for safe-keeping or arrange to store them with Security. Security service is available 24 hours a day. If you need assistance, you can reach Security at 412-623-2990.

Smoke-free campus

To protect our patients, visitors, and staff from the harmful effects of second-hand smoke, smoking is not permitted anywhere on UPMC property. All UPMC hospitals, facilities, and grounds, including parking lots, garages, and other outdoor locations, are smoke-free as of July 1, 2007. UPMC has no designated smoking areas. If you choose to smoke, you cannot do so on the UPMC campus. Anyone who smokes does so against our advice and assumes the risk for any consequences. For information about smoking and how to quit, access the patient education materials on UPMC's website at <http://patienteducation.upmc.com> (select Smoking).



Things to Do in the Area

Near Shadyside

Carnegie Library of Pittsburgh

4400 Forbes Ave., Oakland

412-622-3116 or www.clpgh.org

Main branch of the Carnegie Library. Monday through Thursday, 10 a.m. to 8 p.m.; Friday and Saturday, 9 a.m. to 5:30 p.m.; and Sunday 1 to 5 p.m. Summer hours may differ.

Carnegie Museums of Pittsburgh

4400 Forbes Ave., Oakland

412-622-3131 or www.carnegiemuseums.org

Museum of Art and Museum of Natural History. Tuesday through Saturday, 10 a.m. to 5 p.m.; Sunday, noon to 5 p.m.

Cathedral of Learning

University of Pittsburgh

Fifth Ave. and Bigelow Blvd., Oakland

412-624-6000 or www.tour.pitt.edu

Soaring gothic revival structure featuring 26 Nationality Rooms — classrooms in the styles of various cultural heritages. Weekdays, 9 a.m. to 4 p.m.; Saturday, 9:30 a.m. to 2:30 p.m.; and Sunday, 11 a.m. to 2:30 p.m. Tours by appointment.

Frick Art and Historical Center

7227 Reynolds St., Point Breeze

412-371-0600 or www.frickart.com

Clayton, the restored 19th century home of industrialist Henry Clay Frick; Frick Art Museum; Car and Carriage Museum; Museum Shop; Greenhouse; and Café. Closed Mondays and major holidays. Call for reservations.

Heinz Memorial Chapel

South Bellefield Ave., at the Cathedral of Learning, Oakland

412-624-4157 or www.heinzchapel.pitt.edu

A foremost example of French gothic architecture with renowned stained glass windows. Open for public viewing Sunday through Friday.

Jewish Community Center

5738 Forbes Ave. near Murray Ave.,
Squirrel Hill

412-521-8010 or www.jccpgh.org

Temporary passes available to patients and their families. Temporary preschool available, depending on space.

Phipps Conservatory and Botanical Gardens

Schenley Dr., in Schenley Park, Oakland

412-622-6914 or www.phipps.conservatory.org

A 14-room Victorian glasshouse featuring exotic plants and flowers, with lush outdoor gardens, seasonal shows, and special exhibits.

Daily, 9:30 a.m. to 5 p.m.

Pittsburgh Center for the Arts

Corner of Fifth and Shady avenues, Shadyside
412-361-0873 or www.pittsburgharts.org
Exhibits, classes, and gift shop; located in historic Mellon Park.

Pittsburgh Glass Center

5472 Penn Ave., East End
412-365-2145, ext. 201 or
www.pittsburghglasscenter.org
Gallery and glass studio open to the public,
featuring the work of world-renowned glass artists.
Closed Mondays.

The Pittsburgh Playhouse

222 Craft Ave., Oakland
412-621-4445 or www.pittsburghplayhouse.com
Plays and children's theater run September
through May.

Schenley Park

Schenley Dr., Oakland
412-682-7275 or www.pittsburghparks.org
Beautiful wooded grounds with hiking and biking
trails, swimming pool, picnic shelters, ice skating
rink, golf course, ball fields, and visitor center
with café.

Schenley Plaza

Forbes Ave. and Schenley Dr., Oakland
412-682-7275 or www.schenleyplaza.org
Grand entrance to Schenley Park, with carousel,
food concessions, shaded tent area, lawn and
gardens, summer concerts, and other events.

Soldiers and Sailors Memorial Hall and Museum

4141 Fifth Ave., Oakland

412-621-4253 or www.soldiersandsailorshall.org

Hall of Valor and exhibits from the Civil War to present day conflicts. One of the largest museums dedicated to honoring U.S. veterans.

Stephen Foster Memorial

Forbes Ave. at the Cathedral of Learning, Oakland

412-624-4100 or www.pitt.edu

Museum with a collection of artifacts and memorabilia from the American composer's life and music. Monday through Friday, 9 a.m. to 4 p.m. Admission free; guided tours by appointment for a donation.

Theater hosting drama, music, and dance productions.

University of Pittsburgh

Sports tickets and information:

Phone: 412-648-8300

Web: <http://pittsburghpanthers.com>

Theater and other cultural events:

Phone: 412-624-7529

Web: <http://www.play.pitt.edu>





In and near downtown

Downtown Pittsburgh, known locally as the Golden Triangle, offers several upscale hotels, many fine restaurants, Point State Park, and many opportunities for recreation and relaxation.

Culture

Pittsburgh is home to many arts organizations, including the Pittsburgh Symphony, Pittsburgh Opera, Pittsburgh Ballet Theatre, Pittsburgh Public Theater, City Theatre, American Wind Symphony, Mendelssohn Choir, River City Brass Band, and Civic Light Opera. Pittsburgh's cultural district attracts major artists, entertainers, and Broadway theater productions.

Sports

Pittsburgh is a major sports town — home of Pittsburgh Steelers football, Pirates baseball, and Penguins hockey. College and university teams include the University of Pittsburgh Panthers, Duquesne Dukes, and Carnegie Mellon Tartans. PNC Park and Heinz Field are located on the North Shore, across the Sixth St. Bridge from downtown, and Consol Energy Center sits in the uptown section.



Shopping

Shopping opportunities abound. In downtown Pittsburgh are major department stores Macy's (Fifth Ave. and Smithfield St.) and Saks (Oliver Ave. and Smithfield). Specialty shops offer the convenience of mall shopping downtown at One Oxford Centre (Grant St. and Fourth Ave.) and Fifth Avenue Place (Fifth and Stanwix St.). Near downtown on the South Side is Station Square (across the Smithfield St. Bridge), SouthSide Works (across Hot Metal Bridge from Second Ave.), and the Strip District (Liberty Ave. between 16th and 25th streets).

Family Attractions

Pittsburgh is a family-oriented city, where families can enjoy the Pittsburgh Zoo and PPG Aquarium, Carnegie Science Center and UPMC SportsWorks, Pittsburgh Children's Museum, National Aviary, Senator John Heinz Pittsburgh Regional History Center, Fort Pitt Museum and Blockhouse, Gateway Clipper Cruises, Monongahela and Duquesne inclines, Kennywood amusement park, and Sandcastle Waterpark.

More Information

Visit Pittsburgh

(Greater Pittsburgh Convention and Visitors Bureau)

Phone: 412-281-7711

Toll-free: 1-800-359-0758

Web: www.visitpittsburgh.com





Chaplains and Places of Worship

At the hospital

Chaplains

Chaplains of the Protestant, Jewish, and Roman Catholic faiths are available through the Pastoral Care department. The hospital chaplains serve to meet the spiritual needs of our patients and their families. They are available for ordinary pastoral care and for emergencies. If you wish to contact a Catholic Priest, Jewish Rabbi, or Protestant Minister call 412-623-1691.

Chapel

An interfaith chapel is located in Posner Tower on the first floor, near the Surgical Family Lounge. Prayer books, Bibles, and electric Sabbath candles are available on request. For other needs or information about worship services, call one of the telephone numbers above.

In and near Shadyside

Clergy of many faiths and numerous places of worship are located in or near Shadyside.

Bellefield Presbyterian Church

Fifth Ave. and Thackeray St., Oakland
412-687-3222

Calvary Episcopal Church

315 Shady Ave., Shadyside
412-661-0120

Church of Christ (non-denominational)

Fifth Ave. and Beechwood Blvd., Point Breeze
412-361-5632

Church of the Ascension (Episcopal)

4729 N. Ellsworth Ave., Oakland
412-621-4361

Community of Reconciliation (Protestant)

100 N. Bellefield Ave., Oakland
412-682-2751

Congregation Beth Shalom

(Jewish Conservative)
5915 Beacon St., Squirrel Hill
412-421-2288

Congregation Poale Zedeck (Jewish Orthodox)

Shady and Phillips avenues, Squirrel Hill
412-421-9786

East End Assembly of God

430 S. Evaline St., Bloomfield

412-687-3493

East Liberty Presbyterian Church

Penn and Highland avenues, East Liberty

412-441-3800

First Baptist Church

159 N. Bellefield Ave., Oakland

412-621-0500

First Church of Christ, Scientist

201 N. Dithridge St., Oakland

412-621-5339

First Trinity Evangelical Lutheran Church

535 N. Neville St., Oakland

412-683-4121

First Unitarian Church

605 Morewood Ave., Shadyside

412-621-8008

First United Methodist Church

5401 Centre Ave., Shadyside

412-681-4222





Friends Meeting House (Quaker)

4836 Ellsworth Ave., Oakland

412-683-2669

Heinz Memorial Chapel (non-denominational)

Bellefield Ave. between Forbes and Fifth, Oakland

412-624-4156

Hindu Jain Temple

615 Illini Dr., Monroeville, Pa. (outside the city)

724-325-2073

Holy Spirit Byzantine Catholic Church

4815 Fifth Ave., Oakland

412-687-1220

Islamic Center of Pittsburgh

4100 Bigelow Blvd., Oakland

412-682-5555

New Hope Christian Church

134 N. Dithridge St., Oakland

412-621-6566

New Light Congregation (Jewish Conservative)

1700 Beechwood Blvd. and Forbes Ave.,

Squirrel Hill

412-421-1017



Pittsburgh Buddhist Center

(Theravada Buddhist)

111 Route 908

Natrona Heights, Pa. (outside the city)

724-295-2525

Rodef Shalom Temple (Jewish Reform)

4905 Fifth Ave., Oakland

412-621-6566

Sacred Heart Catholic Church

310 Shady Ave., Shadyside

412-661-0187

Shaare Torah Congregation (Jewish Orthodox)

2319 Murray Ave., Squirrel Hill

412-421-8855

Shadyside Presbyterian Church

5121 Westminster Pl., Shadyside

412-682-4300

Sri Venkateswara Temple (Hindu)

1230 S. McCully Dr., Penn Hills, Pa.

(outside the city)

412-373-3380

St. Andrew Lutheran Church

304 Centre Ave. at Morewood, Shadyside
412-682-3342

St. George Antiochian Orthodox Church

3400 Dawson St., Oakland
412-681-2988

St. Hyacinth/St. Regis Church (Roman Catholic)
(Hispanic/Latino community)

3201 Craft Pl., Oakland
412-687-6292 (bilingual)

St. Nicholas Greek Orthodox Cathedral

419 S. Dithridge St., Oakland
412-682-3866

St. Paul Cathedral (Roman Catholic)

Fifth Ave. at N. Craig St., Oakland
412-621-4951

Temple Sinai (Jewish Reform)

5505 Forbes Ave., Squirrel Hill
412-421-9715

Tree of Life Congregation (Jewish Conservative)

Wilkins and Shady avenues, Squirrel Hill
412-521-6788

Zen Center of Pittsburgh (Soto Zen Buddhist)

124 Willow Ridge Rd., Sewickley, Pa.
(outside the city)
412-741-1262

Driving Directions

UPMC Shadyside
5230 Centre Avenue
Pittsburgh, PA 15232-1381
412-623-2121

On the Web, direct your browser to the following link:

<http://www.upmc.com/HospitalsFacilities/Hospitals/shadyside/Pages/default.aspx>

Click on Directions and parking.

Then click on Get Directions to UPMC Shadyside.

Information for Families and Friends at UPMC Shadyside is produced by UPMC Corporate Communications. Call 412-647-9900 with questions or comments.

The University of Pittsburgh Medical Center is an equal opportunity employer. Policy prohibits discrimination or harassment on the basis of race, color, religion, national origin, ancestry, sex, age, marital status, familial status, sexual orientation, disability, or veteran status. Further, UPMC will continue to support and promote equal employment opportunity, human dignity, and racial, ethnic, and cultural diversity. This policy applies to admissions, employment, and access to and treatment in UPMC programs and activities. This commitment is made by UPMC in accordance with federal, state, and/or local laws and regulations.

Quick Reference

To dial a number that begins with 623- from a hospital phone, dial 3 and the last four digits.

Condition H	412-623-3131	
Family House	412-647-7777	
Financial Counseling	412-623-1632	
Food Services.....	412-623-0028	
Gift Shop	412-623-2058	
Hair Salon (at Hillman)	412-623-3777	
Hopwood Library.....	412-623-2620	
Hospital Operator Assistance	412-623-2121	
Mail	412-623-2126	
Parking.....	412-623-3564	
Pastoral Care Services:		
Chaplin.....	412-623-1691	
Patient Information.....	412-623-2023	
Patient Relations	412-623-2014	
Safety Hot Line	412-623-3999	
Security	412-623-2990	
Special Needs (hearing, language, vision, and physical limitations)		412-623-2014