

System Requirements

To watch our video you will need:

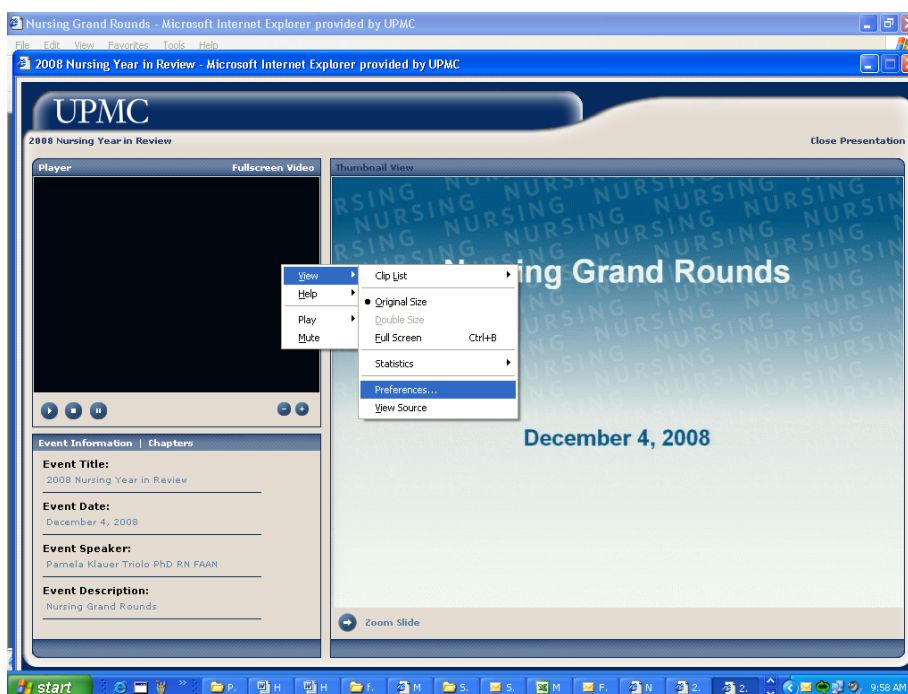
- a computer with a color monitor, sound card, and speakers
- Internet connection
- broadband connection including LAN, cable modem, or DSL. *Viewer experience will vary greatly depending on your network connection.*
- RealPlayer® software

If you are unable to open the video, please download the latest version of RealPayer www.realplayer.com

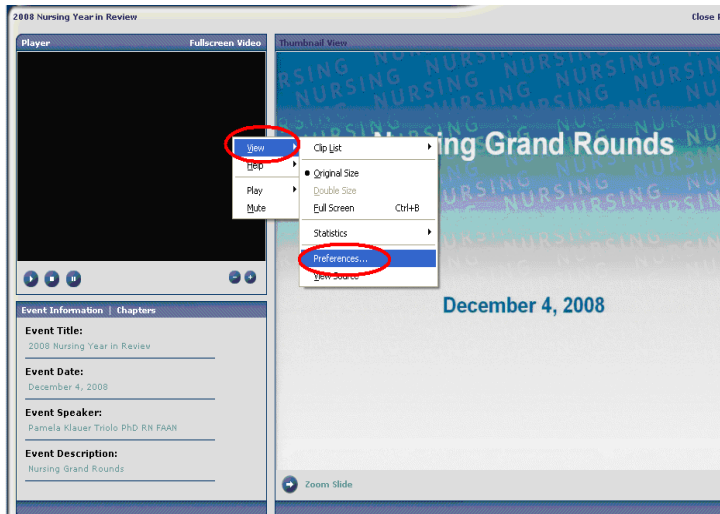
If you can hear the audio, but the video is slow and not displaying properly, you may need to update the video settings for your computer. Please see the steps below.

Update Your Video Settings:

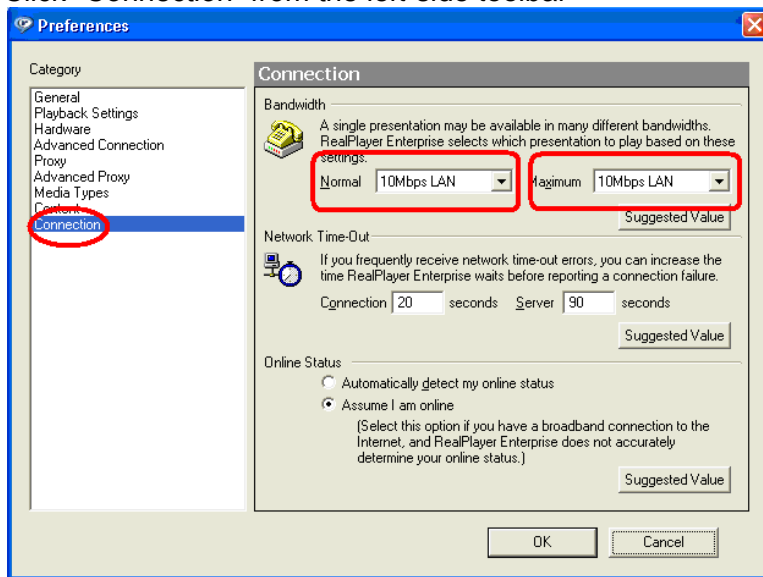
1. Open a Web page
2. You will only need to change the settings once. The setting will take affect for all other videos you view. It doesn't matter what video type you choose to set.



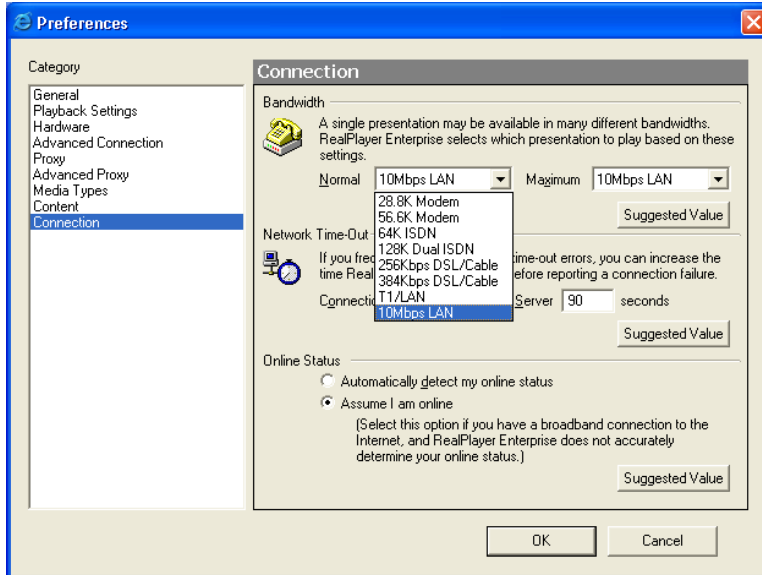
3. Right click on video screen
4. From the menu select "View" then select "Preferences"



5. Click "Connection" from the left-side toolbar



6. On the "Normal" setting, click the dropdown and select "10Mbps Lan"
7. Repeat above for the "Maximum" setting



8. Click "OK"
9. Close out the Web page and re-open the video page
10. Launch the video and view