



ENT (Otolaryngology) Physician UPMC ALTOONA Regional Health Services

About Our Health System

UPMC Altoona (part of the University of Pittsburgh Medical Center hospital network) is a 400-bed regional health care system providing care to residents of a six-county service area in central Pennsylvania. UPMC Altoona is a level II trauma center, regional oncology center, and a JCAHO-certified stroke center. UPMC Altoona provides comprehensive cardiology and cardiovascular surgery, behavioral health and a vascular and wound care center. The Health System's medical staff is comprised of approximately 400 primary care physicians and specialists.

About The UPMC Altoona Ear, Nose, and Throat

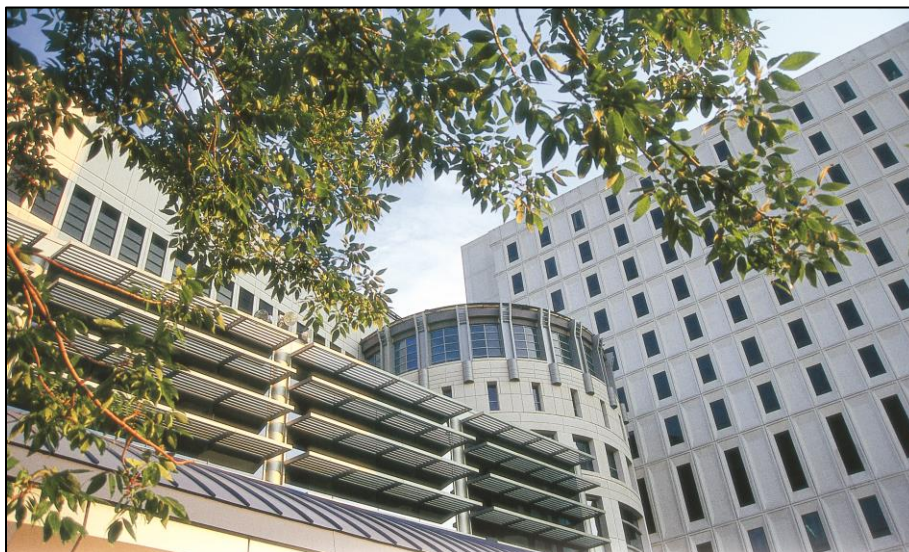
UPMC Altoona Ear, Nose, and Throat provides the full complement of Otolaryngology – head and neck surgery services to patients referred from the primary care physicians in our community, to patients referred from neighboring communities and the hospital's Emergency and Trauma Departments. The practice Altoona office has just relocated to the newly constructed 90,000 sq. ft. medical office complex which also houses audiology and an allergy and immunology service. The local Health System has 19 ORs: 13 in the main hospital and 6 located in the Ambulatory Surgery Center on the hospital campus.

About The Opportunity

Competitive compensation package includes comprehensive benefits package inclusive of health, dental & vision insurance; retirement benefits, malpractice insurance, generous CME allowance.

About Our Community

The Altoona/Blair County/Central Pennsylvania region is a family-oriented community with excellent school systems, abundant cultural amenities, easy access to larger, neighboring cities, and unlimited outdoor and recreational opportunities.



Contact:

Kevin Hockenberry at
hockenberryk2@upmc.edu
814-889-2223

Website:

www.UPMCAaltoona.org